

A woman with voluminous curly hair is the central figure, wearing a white lace wedding dress with a long, flowing veil. She is standing on a bridge with a metal lattice railing. The background shows a stone bridge structure and a cityscape under a bright sky. The text is overlaid on the image.

MAGGIE SOTTERO®

the iconic collection

SPRING 2023



ICONIC / TIMELESS BEAUTY / AWE-INSPIRING INNOVATIONS / THE PINNACLE OF LOVE /

celebrating twenty-five years

Anniston 23MS040A01

MAGGIE SOTTERO®

personalize it!
FOR YOUR LOVE STORY



23MS040A01, CH
Size 6



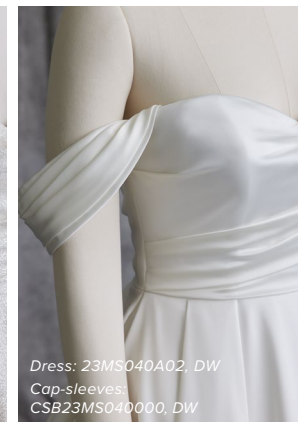
23MS040A01, CH
Size 6



23MS040A01, IV



Dress: 23MS040A01, CH
Cap-sleeves:
CSA23MS040000, CH



Dress: 23MS040A02, DW
Cap-sleeves:
CSB23MS040000, DW



Dress: 23MS040A02, DW



23MS040A01, CH



23MS040A01, CH
Size 18

Anniston 23MS040A01

COLORS

- Champagne (pictured)
- Ivory (pictured)

HIGHLIGHTS

- Glitter tulle
- Asymmetrical ruched bodice
- Sweetheart neckline
- Zipper with inner elastic closure and covered buttons trailing to the hem
- Pockets

ACCESSORIES

- Detachable glitter tulle off-the-shoulder cap-sleeves sold separately

Anniston 23MS040A02

COLORS

- Diamond White (pictured)

HIGHLIGHTS

- Luminous shimmer satin
- Asymmetrical ruched bodice
- Sweetheart neckline
- Zipper with inner elastic closure and covered buttons trailing to the hem
- Pockets

ACCESSORIES

- Detachable Luminous shimmer satin off-the-shoulder cap-sleeves sold separately

SIZES: 0-28

PERSONALIZATION OPTIONS & PRICING

23MS040A01 <i>(Glitter tulle)</i>
23MS040A02 <i>(Luminous shimmer satin)</i>

ACCESSORIES PRICING

CSA23MS040000 <i>(Cap-sleeves, Glitter tulle)</i>
CSB23MS040000 <i>(Cap-sleeves, Luminous shimmer satin)</i>

MISCELLANEOUS PERSONALIZATION PRICING

Extend the train for added drama (up to 12 in/30 cm) or remove the train for a more casual look through special request

Audrina 23MC049A01

MAGGIE SOTTERO®

personalize it!
FOR YOUR LOVE STORY





23MC049B01, IV/NAT



23MC049A01, IV/NAT



Dress: 23MC049A01, IV/NAT
Cathedral veil: VL023MC049000, IV
Size 6



23MC049B01, IV/NAT



23MC049A01, IV/NAT



23MC049B01, IV/NAT

Audrina 23MC049A01

COLORS

- Ivory gown with Natural Illusion (pictured)

HIGHLIGHTS

- Aldora stretch crepe
- Sheer beaded lace motifs over Chantilly lace and lined with organza
- Illusion halter neckline
- Illusion lace back
- Lined with Virtue stretch jersey for comfort
- Zipper with covered buttons trailing to the hem
- Illusion lace train cutout

SIZES: 0-28

ACCESSORIES

- Detachable long illusion lace sleeves sold separately (*not pictured*)
- Cathedral length veil embellished with lace motifs sold separately
**Veil measures 120 in (305 cm)*

MISCELLANEOUS

- Photographed with light nude bra cups, dark nude available separately

PERSONALIZATION OPTIONS & PRICING

23MC049A01 <i>(Unlined bodice)</i>
23MC049A11 <i>(Unlined bodice, extended train)</i>
23MC049B01 <i>(Lined bodice)</i>
23MC049B11 <i>(Lined bodice, extended train)</i>

ACCESSORIES PRICING

DS023MC049000 <i>(Sleeves)</i>
VL023MC049000 <i>(Cathedral veil)</i>

MISCELLANEOUS PERSONALIZATION PRICING

Extend the train for added drama (up to 24 in/61 cm) or remove the train for a more casual look through special request

Bernadette 23MK057A01

MAGGIE SOTTERO®

personalize it!
FOR YOUR LOVE STORY



23MK057A01, IV BLS/NAT



23MK057B02, IV/NAT
Size 18



Dress: 23MK057A01, IV BLS/NAT
Fingertip veil: VLA23MK057000, IV
Size 12



Dress: 23MK057A01, IV BLS/NAT
Veil: VLA23MK057000, IV



23MK057B02, IV MCH/NAT



Bernadette 23MK057A01

COLORS

- All Ivory gown with Ivory Illusion
- Ivory gown with Natural Illusion (pictured)
- Ivory over Soft Blush gown with Natural Illusion (pictured)
- Ivory over Mocha gown with Natural Illusion (pictured)

HIGHLIGHTS

- Beaded lace motifs over sparkle tulle
- Asymmetrical illusion lace bodice
- Deep V-neckline
- Illusion lace back
- Illusion lace cap-sleeves
- Covered button over zipper closure
- Detachable beaded flowers on shoulders included
- Horsehair hem finish

SIZES: 0-28

ACCESSORIES

- Fingertip length veil embellished with lace motifs sold separately
*Veil measures 46 in (117 cm)
- Chapel length veil embellished with lace motifs sold separately
*Veil measures 108 in (274 cm)

MISCELLANEOUS

- Extra lace motif included for minor neckline alterations
- Photographed with light nude bra cups, dark nude available separately

PERSONALIZATION OPTIONS & PRICING

23MK057A01 <i>(Unlined bodice, sparkle tulle 1)</i>
23MK057A02 <i>(Unlined bodice, change sparkle tulle 1 to plain tulle)</i>
23MK057B01 <i>(Lined bodice, sparkle tulle 1)</i>
23MK057B02 <i>(Lined bodice, change sparkle tulle 1 to plain tulle)</i>

ACCESSORIES PRICING

VLA23MK057000 <i>(Fingertip veil)</i>
VLB23MK057000 <i>(Chapel veil)</i>

MISCELLANEOUS PERSONALIZATION PRICING

Remove the train for a more casual look through special request
Add covered buttons down the back for a vintage vibe

Cameron 23MW115A01

MAGGIE SOTTERO®

personalize it!
FOR YOUR LOVE STORY



Dress: 23MW115A01, DW
Detachable train: DT023MW115000, DW
Size 6

MAGGIE SOTTERO
THIS GOWN IS MADE WITH LUXE
JERSEY LINING
Designed for a
comfortable fit that is
ultra-lightweight



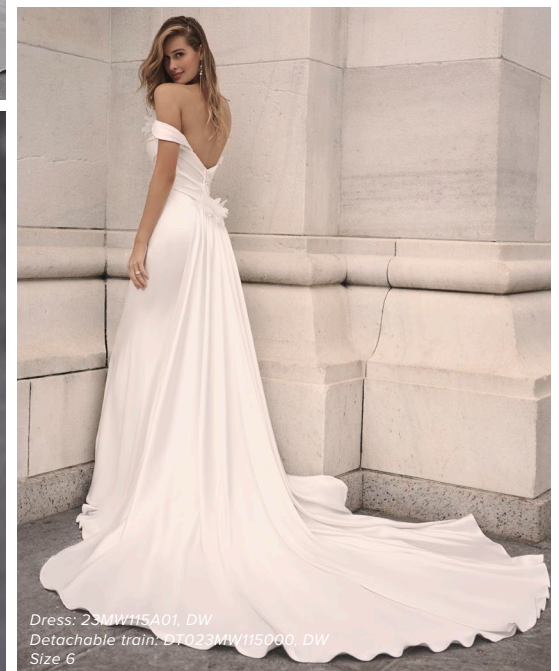
Dress: 23MW115A01, DW
Floor length veil: VL023MW115000, DW



Dress: 23MW115A01, DW
Detachable train: DT023MW115000, DW



23MW115A01, DW



Dress: 23MW115A01, DW
Detachable train: DT023MW115000, DW
Size 6



23MW115A01, DW
Size 6



Dress: 23MW115A01, DW
Floor length veil: VL023MW115000, DW



Dress: 23MW115A01, DW
Detachable train: DT023MW115000, DW
Size 6



Dress: 23MW115A01, DW
Detachable train: DT023MW115000, DW



23MW115A01, DW

Cameron 23MW115A01

COLORS

- All Diamond White (pictured)

HIGHLIGHTS

- Ganavi stretch Mikado
- Off-the-shoulder scoop neckline
- Ruched Ganavi stretch Mikado off-the-shoulder cap-sleeves accented with 3-D lace flowers
- Lined with Brisa stretch jersey for comfort
- Zipper with inner elastic closure and covered buttons trailing to the hem

SIZES: 0-24

ACCESSORIES

- Detachable Ganavi stretch Mikado train accented with 3-D lace flowers sold separately
- Two-tier floor length wedding veil accented with 3-D lace flowers sold separately *Veil measures 77 in (198 cm)

PERSONALIZATION OPTIONS & PRICING

23MW115A01

ACCESSORIES PRICING

DT023MW115000
(Detachable train)

VL023MW115000
(Floor length veil)

MISCELLANEOUS PERSONALIZATION PRICING

Opt to shorten the train (up to 12 in/30 cm) or remove the train for a more casual look through special request

Conley 23MC111A01

MAGGIE SOTTERO®

personalize it!
FOR YOUR LOVE STORY





Dress: 23MC111A01, IV MCH
Jacket: JK023MC111000, IV/IV



Dress: 23MC111A01, IV MCH
Jacket: JK023MC111000, IV/IV



Dress: 23MC111A01, IV MCH
Jacket: JK023MC111000, IV/IV



Dress: 23MC111A01, IV MCH
Cathedral veil: VL023MC111000, IV
Size 6



23MC111A01, IV MCH

Conley 23MC111A01

COLORS

- All Ivory
- Ivory over Blush
- Ivory over Mocha (pictured)

HIGHLIGHTS

- Lace motifs over texture tulle, sequin tulle, and glitter tulle
- Corset detailing accented with sequined lace motifs on bodice
- Strapless sweetheart neckline
- Invisible zipper with inner elastic closure
- Horsehair hem finish

SIZES: 0-28

ACCESSORIES

- Detachable illusion allover lace jacket with long fitted sleeves and button closure sold separately
- Cathedral length veil embellished with lace motifs sold separately
**Veil measures 120 in (305 cm)*

PERSONALIZATION OPTIONS & PRICING

23MC111A01 <i>(Glitter tulle 3 and sequin tulle)</i>
23MC111A02 <i>(Change glitter tulle 3 to plain tulle, keep sequin tulle)</i>

ACCESSORIES PRICING

JK023MC111000 <i>(Jacket)</i>
VL023MC111000 <i>(Cathedral veil)</i>

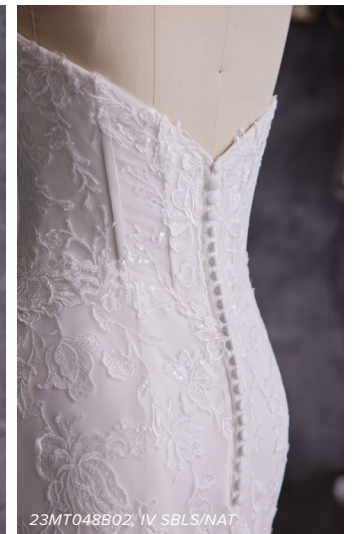
MISCELLANEOUS PERSONALIZATION PRICING

Remove the train for a more casual look through special request

Danielle 23MT048A01

MAGGIE SOTTERO®

personalize it!
FOR YOUR LOVE STORY





Danielle 23MT048A01

COLORS

- All Ivory gown with Ivory Illusion (pictured)
- Ivory over Soft Blush gown with Natural Illusion (pictured)
- Ivory over Pearl gown with Natural Illusion (pictured)
- Ivory over Mocha gown with Natural Illusion

HIGHLIGHTS

- Lace motifs accented with sequins over sparkle tulle
- Sheer organza lined bodice with corset detailing
- Lined with Roma satin
- Covered button over zipper closure

SIZES: 0-28

ACCESSORIES

- Detachable off-the-shoulder ruched tulle and lace cap-sleeves sold separately
- Long fitted illusion lace sleeve armbands sold separately
- Cathedral length tulle veil edged with lace motifs sold separately *Veil measures 120 inch (305 cm)

MISCELLANEOUS

- Extra lace motif included for minor neckline alterations
- Photographed with light nude bra cups, dark nude available separately

PERSONALIZATION OPTIONS & PRICING

23MT048A01 <i>(Unlined bodice, sparkle tulle 1)</i>
23MT048A02 <i>(Unlined bodice, change sparkle tulle 1 to plain tulle)</i>
23MT048A11 <i>(Unlined bodice, added hem lace, sparkle tulle 1)</i>
23MT048A12 <i>(Unlined bodice, added hem lace, change sparkle tulle 1 to plain tulle)</i>
23MT048B01 <i>(Lined bodice, sparkle tulle 1)</i>
23MT048B02 <i>(Lined bodice, change sparkle tulle 1 to plain tulle)</i>
23MT048B11 <i>(Lined bodice, added hem lace, sparkle tulle 1)</i>
23MT048B12 <i>(Lined bodice, added hem lace, change sparkle tulle 1 to plain tulle)</i>

ACCESSORIES PRICING

CS023MT048000 <i>(Cap-sleeves)</i>
DS023MT048000 <i>(Long sleeve armbands)</i>
VL023MT048000 <i>(Cathedral veil)</i>

MISCELLANEOUS PERSONALIZATION PRICING

Opt to shorten the train (up to 12 in/30 cm)
Add covered buttons down the back for a vintage vibe

Darius 23MW134A01

MAGGIE SOTTERO®





23MW134A01, IV



23MW134A01, IV
Size 6

Darius 23MW134A01

COLORS

- All Ivory (pictured)

HIGHLIGHTS

- Felicity Mikado
- Asymmetrical pleated bodice
- Off-the-shoulder portrait neckline
- Off-the-shoulder cap-sleeves
- Zipper with inner elastic closure and covered buttons trailing to the hem
- Side slit

SIZES: 0-28

PERSONALIZATION OPTIONS & PRICING

23MW134A01

Deborah 23MW108A01

MAGGIE SOTTERO®

personalize it!
FOR YOUR LOVE STORY





Deborah 23MW108A01

COLORS

- Ivory gown with Natural Illusion (pictured)

HIGHLIGHTS

- Sequined lace motifs over sparkle tulle
- Sheer lace bodice lined with organza
- Deep illusion V-neckline
- Illusion lace square back
- Illusion lace tank straps
- Covered button over zipper closure

SIZES: 0-28

MISCELLANEOUS

- Extra lace motif included for minor neckline alterations
- Photographed with light nude bra cups, dark nude available separately

PERSONALIZATION OPTIONS & PRICING

23MW108A01
(Sparkle tulle 1)

23MW108A02
(Change sparkle tulle 1 to plain tulle)

MISCELLANEOUS PERSONALIZATION PRICING

Opt to shorten the train (up to 12 in/30 cm) or remove the train for a more casual look through special request

Add covered buttons down the back for a vintage vibe

Estella 23MK042A01

MAGGIE SOTTERO®

personalize it!
FOR YOUR LOVE STORY





Estella 23MK042A01

COLORS

- Ivory gown with Natural Illusion (pictured)
- Ivory over Blush gown with Natural Illusion (pictured)

HIGHLIGHTS

- Beaded lace motifs over tulle
- Illusion beaded lace bodice lined with Chantilly lace
- Deep illusion V-neckline
- Plunging illusion V-back
- Lined with Virtue stretch jersey for comfort
- Covered button over zipper closure
- Illusion tulle side insets
- Extended illusion lace train

SIZES: 0-28

ACCESSORIES

- Detachable long illusion lace bell sleeves sold separately

MISCELLANEOUS

- Photographed with light nude bra cups, dark nude available separately

PERSONALIZATION OPTIONS & PRICING

23MK042A01
(Unlined bodice)

23MK042B01
(Lined bodice)

ACCESSORIES PRICING

DS023MK042000
(Bell sleeves)

MISCELLANEOUS PERSONALIZATION PRICING

Opt to shorten the train (up to 12 in/30 cm), or remove the train for a more casual look through special request

Add covered buttons down the back for a vintage vibe

Fairbanks 23MC050A01

MAGGIE SOTTERO®

personalize it!
FOR YOUR LOVE STORY





23MC050A01, IV/IV



Dress: 23MC050A01, IV/IV
Veil: VL023MC050000, IV
Size 6



23MC050A01, IV/IV



23MC050A01, IV/IV



Dress: 23MC050A01, IV/IV
Veil: VL023MC050000, IV

Fairbanks 23MC050A01

COLORS

- All Ivory gown with Ivory Illusion (pictured)

HIGHLIGHTS

- Mariota organza
- Bodice accented with beaded lace motifs
- V-neckline
- Deep illusion V-back
- Beaded spaghetti straps
- Covered button over zipper closure
- Pockets

SIZES: 0-28

ACCESSORIES

- Chapel length veil embellished with lace motifs sold separately
**Veil measures 108 in (274 cm)*

PERSONALIZATION OPTIONS & PRICING

23MC050A01

ACCESSORIES PRICING

VL023MC050000
(Chapel veil)

MISCELLANEOUS PERSONALIZATION PRICING

Remove the train for a more casual look through special request

Add covered buttons down the back for a vintage vibe

Glenrowan 23MC114A01

MAGGIE SOTTERO®

personalize it!
FOR YOUR LOVE STORY



23MC114A01, IV MV/NAT



23MC114A01, IV MV/NAT



23MC114A01, IV MV/NAT



MAGGIE SOTTERO
THIS GOWN IS MADE WITH LUXE
JERSEY LINING
Designed for a
comfortable fit that is
ultra-lightweight.

23MC114A01, IV MV/NAT
Size 6



Glenrowan 23MC114A01

COLORS

- Ivory gown with Natural Illusion
- Ivory over Soft Nude gown with Natural Illusion
- Ivory over Misty Mauve gown with Natural Illusion (pictured)

HIGHLIGHTS

- Unembellished lace motifs over sparkle tulle
- Soft V-neckline
- Illusion plunging V-back
- Illusion lace long fitted sleeves with flared cuff
- Lined with Wynn stretch jersey for comfort
- Covered button over zipper closure

SIZES: 0-28

PERSONALIZATION OPTIONS & PRICING

23MC114A01 <i>(Sparkle tulle 1)</i>
23MC114A02 <i>(Change sparkle tulle 1 to plain tulle)</i>

MISCELLANEOUS PERSONALIZATION PRICING

Extend the train for added drama (up to 12 in/30 cm), opt to shorten the train (up to 12 in/30 cm) or remove the train for a more casual look through special request

Add covered buttons down the back for a vintage vibe

Grace 23MC106A01

MAGGIE SOTTERO®

personalize it!
FOR YOUR LOVE STORY



Dress: 23MC106A01, IV BLS/NAT
Cape (Clark): CAA23SC103000, IV
Size 6



Dress: 23MC106A01, IV BLS/NAT
Cap-sleeves: CS023MC106000, IV/IV



Dress: 23MC106A01, IV BLS/NAT
Cape (Clark): CAA23SC103000, IV



23MC106A01, IV BLS/NAT
Size 6



Dress: 23MC106A01, IV BLS/NAT
Cape (Clark): CAA23SC103000, IV



Dress: 23MC106A01, IV BLS/NAT
Cape (Clark): CAA23SC103000, IV



23MC106A01, IV BLS/NAT



23MC106B02, IV BLS/NAT



Dress:
23MC106A01, IV BLS/NAT
Cap-sleeves:
CS023MC106000, IV/IV



23MC106A01, IV BLS/NAT

Grace 23MC106A01

COLORS

- Ivory gown with Natural Illusion
- Ivory over Platinum gown with Natural Illusion
- Ivory over Blush gown with Natural Illusion
- Ivory over Latte gown with Natural Illusion

HIGHLIGHTS

- All-over lace embellished with sequins over beaded tulle
- Sweetheart with plunging illusion V-neckline
- Covered button over zipper closure

SIZES: 0-28

ACCESSORIES

- Detachable off-the-shoulder lace cap-sleeves sold separately
- Cape embellished with rhinestones and beading sold separately (Clark, CAA23SC103000 in All Ivory and CAB23SC103000 in Silver)

MISCELLANEOUS

- Extra lace motif included for minor neckline alterations;

PERSONALIZATION OPTIONS & PRICING

23MC106A01 (Zipper, beaded tulle 1)
23MC106A02 (Zipper, change beaded tulle 1 to plain tulle)
23MC106B01 (Lace-up, beaded tulle 1)
23MC106B02 (Lace-up, change beaded tulle 1 to plain tulle)

ACCESSORIES PRICING

CS023MC106000 (Cap-sleeves)
CAA23SC103000 (Clark) (Cape, All Ivory)
CAB23SC103000 (Clark) (Cape, Silver)

MISCELLANEOUS PERSONALIZATION PRICING

Remove the train for a more casual look through special request
Add covered buttons down the back for a vintage vibe

Hillary 23MK068A01

MAGGIE SOTTERO®

personalize it!
FOR YOUR LOVE STORY





Hillary 23MK068A01

COLORS

- Ivory gown with Natural Illusion
- Ivory over Pearl gown with Natural Illusion (pictured)
- Ivory over Mocha gown with Natural Illusion

HIGHLIGHTS

- Unembellished allover lace
- Illusion lace bodice
- Plunging illusion V-neckline
- Plunging illusion lace V-back
- Lace trim spaghetti straps
- Lined with Virtue stretch jersey for comfort
- Covered button over zipper closure
- Scalloped illusion lace train

SIZES: 0-28

ACCESSORIES

- Detachable allover lace puff sleeves sold separately

MISCELLANEOUS

- Photographed with light nude bra cups, dark nude available separately

PERSONALIZATION OPTIONS & PRICING

23MK068A01 (Unlined bodice)
23MK068B01 (Lined bodice)

ACCESSORIES PRICING

DS023MK068000 (Puff sleeves)

MISCELLANEOUS PERSONALIZATION PRICING

Remove the train for a more casual look through special request
Add covered buttons down the back for a vintage vibe

Jessica 23MC091A01

MAGGIE SOTTERO®

personalize it!
FOR YOUR LOVE STORY





23MC091A01, IV/IV



23MC091A01, IV/IV
Size 6



23MC091A01, IV/IV



23MC091A01, IV/IV

Jessica 23MC091A01

COLORS

- Ivory gown with Ivory Illusion (pictured)

HIGHLIGHTS

- Revina chiffon
- Soft V-neckline edged with illusion lace
- Soft illusion V-back
- Beaded spaghetti straps
- Lined with Donella crepe
- Zipper with covered buttons trailing to the hem
- Detachable back cowl included
- Illusion lace cut out train

SIZES: 0-28

PERSONALIZATION OPTIONS & PRICING

23MC091A01

MISCELLANEOUS PERSONALIZATION PRICING

Opt to shorten the train (up to 12 in/30 cm), or remove the train for a more casual look through special request

Josephine Leigh 21MW374C01

MAGGIE SOTTERO®

personalize it!
FOR YOUR LOVE STORY





21MW374C01, IV
Size 6



21MW374C01, IV



21MW374C01, IV
*Shown with detachable inner cap-sleeves
Size 6

Josephine Leigh 22MW374C01

COLORS

- All Ivory (pictured)

HIGHLIGHTS

- Lindo crepe
- Modest V-neckline
- Modest V-back
- Long Mariota organza bishop sleeves with button closure at the wrist
- Lined with Donella crepe
- Zipper with covered buttons trailing to the hem
- Detachable inner cap-sleeves for modesty included
- Pockets

SIZES: 0-28

SISTER STYLES

- Available with deep V-neckline and V-back (Josephine, 21MW374A01)
- Available with V-neckline and V-back (Josephine Lynette, 21MW374B01)

PERSONALIZATION OPTIONS & PRICING

21MW374C01
(Modest)

MISCELLANEOUS PERSONALIZATION PRICING

Opt to shorten the train (up to 12 in/30 cm), or remove the train for a more casual look through special request

Kashlynn 23MW131A01

MAGGIE SOTTERO®

personalize it!
FOR YOUR LOVE STORY





Kashlynn 23MW131A01

COLORS

- All Ivory (pictured)

HIGHLIGHTS

- Lindo crepe
- Modest scoop neckline
- Modest scoop back
- Shavon organza puffed short sleeves
- Lined with Brisa stretch jersey for comfort
- Zipper with covered buttons trailing to the hem
- Detachable inner cap-sleeves for modesty included

SIZES: 0-28

PERSONALIZATION OPTIONS & PRICING

23MW131A01

MISCELLANEOUS PERSONALIZATION PRICING

Remove the train for a more casual look through special request

Keisha 23MB065A01

MAGGIE SOTTERO®

personalize it!
FOR YOUR LOVE STORY





23MB065A01, IV BLS/NAT



23MB065A01, IV BLS/NAT



23MB065A02, IV BLS/NAT

Keisha 23MB065A01

COLORS

- All Ivory gown with Ivory Illusion
- Ivory gown with Natural Illusion
- Ivory over Blush gown with Natural Illusion (pictured)

HIGHLIGHTS

- Unembellished allover lace over sparkle tulle
- Illusion lace bodice
- Deep illusion V-neckline
- Illusion lace deep V-back
- Beaded spaghetti straps
- Lined with Rosario crepe back satin
- Covered button over zipper closure
- Horsehair hem finish
- Extended illusion lace train

SIZES: 0-28

MISCELLANEOUS

- Extra lace motif included for minor neckline alterations
- Photographed with bra cups, dark nude available separately

PERSONALIZATION OPTIONS & PRICING

23MB065A01 <i>(Sparkle tulle)</i>
23MB065A02 <i>(Change sparkle tulle to plain tulle)</i>

MISCELLANEOUS PERSONALIZATION PRICING

Remove the train for a more casual look through special request
Add covered buttons down the back for a vintage vibe

Kylianne 23MK053A01

MAGGIE SOTTERO®

personalize it!
FOR YOUR LOVE STORY





Kylianne 23MK053A01

COLORS

- All Ivory gown with Ivory Illusion (pictured)
- Ivory over Misty Mauve gown with Ivory Illusion (pictured)

HIGHLIGHTS

- Beaded lace motifs over beaded tulle
- Sheer beaded lace bodice lined with organza
- V-neckline
- Plunging V-back
- Beaded spaghetti straps
- Lined with Virtue stretch jersey for comfort
- Covered button over zipper closure

SIZES: 0-28

MISCELLANEOUS

- Photographed with light nude bra cups, dark nude available separately

PERSONALIZATION OPTIONS & PRICING

23MK053A01 <i>(Unlined bodice, beaded tulle 1)</i>
23MK053A02 <i>(Unlined bodice, change beaded tulle 1 to Chantilly lace)</i>
23MK053B01 <i>(Lined bodice, beaded tulle 1)</i>
23MK053B02 <i>(Lined bodice, change beaded tulle 1 to Chantilly lace)</i>

MISCELLANEOUS PERSONALIZATION PRICING

Opt to shorten the train (up to 12 in/30 cm), or remove the train for a more casual look through special request

Add covered buttons down the back for a vintage vibe

Leandra 23MT123A01

MAGGIE SOTTERO®

personalize it!
FOR YOUR LOVE STORY





23MT123A01, IV SND/NAT



23MT123A01, IV SND/NAT



23MT123A01, IV SND/NAT



23MT123A01, IV SND/NAT
Size 6

Leandra 23MT123A01

COLORS

- All Ivory gown with Ivory Illusion
- Ivory over Soft Nude gown with Natural Illusion (pictured)

HIGHLIGHTS

- Allover lace
- Off-the-shoulder portrait neckline accented with 3-D flowers
- Illusion lace back
- Off-the-shoulder 3-D lace cap-sleeves
- Lined with Arlo chiffon
- Covered button over zipper closure
- Horsehair hem finish
- Illusion lace train

SIZES: 0-28

PERSONALIZATION OPTIONS & PRICING

23MT123A01

(Plain tulle)

23MT123A02

(Change 2nd layer of tulle to sparkle tulle 1)

MISCELLANEOUS PERSONALIZATION PRICING

Remove the train for a more casual look through special request

Add covered buttons down the back for a vintage vibe

Marabel 23MC083A01

MAGGIE SOTTERO®

personalize it!
FOR YOUR LOVE STORY





Marabel 23MC083A01

COLORS

- All Ivory gown with Ivory Illusion
- Ivory over Pearl gown with Natural Illusion (pictured)
- Ivory over Blush gown with Natural Illusion

HIGHLIGHTS

- Beaded lace motifs over tulle and Chic organza
- Sheer organza lined bodice
- Deep illusion V-neckline
- Illusion deep V-back
- Illusion beaded lace tank straps
- Lined with Delustered satin
- Covered button over zipper closure

SIZES: 0-28

MISCELLANEOUS

- Photographed with light nude bra cups, dark nude available separately

PERSONALIZATION OPTIONS & PRICING

23MC083A01 <i>(Unlined bodice, plain tulle)</i>
23MC083A02 <i>(Unlined bodice, change plain tulle to sparkle tulle 1)</i>
23MC083B01 <i>(Lined bodice, plain tulle)</i>
23MC083B02 <i>(Lined bodice, change plain tulle to sparkle tulle 1)</i>

MISCELLANEOUS PERSONALIZATION PRICING

Remove the train for a more casual look through special request
Add covered buttons down the back for a vintage vibe

Micah 23MC063A01

MAGGIE SOTTERO®

personalize it!
FOR YOUR LOVE STORY



Dress: 23MC063A01, IV MCH/IV
Veil: VL023MC063000, IV



Dress: 23MC063A01, IV MCH/IV
Veil: VL023MC063000, IV



Dress: 23MC063A01, IV MCH/IV
Veil: VL023MC063000, IV
Size 6



23MC063A01, IV MCH/IV



23MC063A01, IV MCH/IV



23MC063A01, IV MCH/IV



23MC063A01, IV MCH/IV
Size 6



23MC063A01, IV MCH/IV



23MC063A01, IV MCH/IV



23MC063A01, IV MCH/IV

Micah 23MC063A01

COLORS

- All Ivory gown with Ivory Illusion
- Ivory over Blush gown with Ivory Illusion
- Ivory over Mocha gown with Ivory Illusion (pictured)

HIGHLIGHTS

- Mariota organza
- Beaded lace bodice
- V-neckline with beaded edge
- Deep illusion scoop back
- Illusion beaded lace cap-sleeves
- Covered button over zipper closure

SIZES: 0-28

ACCESSORIES

- Chapel length veil embellished with lace motifs sold separately
**Veil measures 108 in (274 cm)*

PERSONALIZATION OPTIONS & PRICING

23MC063A01

ACCESSORIES PRICING

VL023MC063000
(Chapel veil)

MISCELLANEOUS PERSONALIZATION PRICING

Remove the train for a more casual look through special request

Add covered buttons down the back for a vintage vibe

Nikolina 23MS097A01

MAGGIE SOTTERO®

personalize it!
FOR YOUR LOVE STORY





23MS097A01, IV BLS/NAT



23MS097B01, IV/IV
Size 12



23MS097B01, IV/IV



23MS097A01, IV BLS/NAT



Dress: 23MS097A01, IV BLS/NAT
Chapel veil: VL023MS097000, IV

Nikolina 23MS097A01

COLORS

- All Ivory gown with Ivory Illusion (pictured)
- Ivory over Misty Mauve gown with Ivory Illusion (pictured)
- Ivory over Blush gown with Natural Illusion (pictured)
- Ivory over Nude gown with Natural Illusion

HIGHLIGHTS

- Beaded embroidery over sparkle tulle
- Illusion sparkle side cut outs accented with beaded embroidery
- Scoop neckline
- Plunging illusion v-back
- Beaded spaghetti straps
- Lined with Virtue stretch jersey for comfort
- Crystal button over zipper closure
- Lace detailing trails down train for added drama

SIZES: 0-28

ACCESSORIES

- Scallop chapel length veil accented with beaded embroidery sold separately *Veil measures 108 inch (274 cm)

MISCELLANEOUS

- Photographed with light nude bra cups, dark nude available separately

PERSONALIZATION OPTIONS & PRICING

23MS097A01
(Unlined bodice, sparkle tulle)

23MS097B01
(Lined bodice, sparkle tulle)

ACCESSORIES PRICING

VL023MS097000
(Chapel veil)

MISCELLANEOUS PERSONALIZATION PRICING

Extend the train for added drama (up to 12 in/30 cm), opt to shorten the train (up to 12 in/30 cm) or remove the train for a more casual look through special request

Add crystal buttons down the back for a vintage vibe

Noah 23MS069A01

MAGGIE SOTTERO®

personalize it!
FOR YOUR LOVE STORY





23MS069A01, IV/NAT
Size 12



23MS069A01, IV/NAT



Dress: 23MS069A01, IV/NAT
Chapel veil: VLB22SK00600 (Essex), IV

Noah 23MS069A01

COLORS

- Ivory gown with Natural Illusion (pictured)

HIGHLIGHTS

- Charming crepe
- V-neckline
- Plunging illusion back with beaded embroidery
- Beaded spaghetti straps
- Lined with Jenday stretch jersey for comfort
- Zipper closure with crystal buttons trailing down the hem

SIZES: 0-28

ACCESSORIES

- Photographed with chapel length tulle wedding veil edged in beaded detailing (Essex, VLB22SK006000) *Veil measures 108 in (274 cm)

PERSONALIZATION OPTIONS & PRICING

23MS069A01

ACCESSORIES

VLB22SK006000 (Essex)
(Chapel veil)

MISCELLANEOUS PERSONALIZATION PRICING

Extend the train for added drama (up to 12 in/30 cm), opt to shorten the train (up to 12 in/30 cm) or remove the train for a more casual look through special request

Add crystal buttons down the back for a vintage vibe

Oriana 23MK113A01

MAGGIE SOTTERO®

personalize it!
FOR YOUR LOVE STORY





23MK113B01, IV MCH/IV



Dress: 23MK113A01, IV BLS/IV
Cap-sleeves: CS023MK113000, IV/IV
Size 12



Dress: 23MK113A01, IV BLS/IV
Cathedral veil: VL023MK113000, IV



23MK113B01, IV MCH/IV



23MK113A01, IV BLS/IV

Oriana 23MK113A01

COLORS

- Ivory gown with Ivory Illusion
- Ivory over Pearl gown with Ivory Illusion
- Ivory over Blush gown with Ivory Illusion (pictured)
- Ivory over Mocha gown with Ivory Illusion (pictured)

HIGHLIGHTS

- Beaded lace motifs over tulle
- Illusion beaded lace bodice with exposed boning detail
- Strapless sweetheart neckline
- Covered button over zipper closure
- All colorways feature nude boning closure on the inner bodice

SIZES: 0-28

ACCESSORIES

- Detachable off-the-shoulder beaded lace cap-sleeves sold separately
- Chapel length tulle veil embellished with lace motifs sold separately
**Veil measures 120 in (305 cm)*

MISCELLANEOUS

- Photographed with light nude bra cups, dark nude available separately

PERSONALIZATION OPTIONS & PRICING

23MK113A01 <i>(Unlined bodice)</i>
23MK113B01 <i>(Lined bodice)</i>

ACCESSORIES PRICING

CS023MK113000 <i>(Cap-sleeves)</i>
VL023MK113000 <i>(Cathedral veil)</i>

MISCELLANEOUS PERSONALIZATION PRICING

Remove the train for a more casual look through special request
Add covered buttons down the back for a vintage vibe

Primrose Leigh 22MK002C01

MAGGIE SOTTERO®

personalize it!
FOR YOUR LOVE STORY





22MK002C01, IV/IV
Size 6



22MK002C01, IV/IV



22MK002C01, IV/IV

Primrose Leigh 22MK002C01

COLORS

- All Ivory gown with Ivory Illusion (pictured)

HIGHLIGHTS

- Blanca stretch chiffon
- Bodice accented with beaded lace motifs
- Modest sweetheart neckline
- Modest V-back
- Modest tulle flutter sleeves lined with inner cap-sleeve
- Lined with Virtue stretch jersey for comfort
- Zipper closure

SIZES: 0-28

SISTER STYLES

- Available with an illusion beaded lace bodice with V-neckline and beaded spaghetti straps (Primrose, 22MK002A01)
- Available with a lined front beaded lace bodice with V-neckline and beaded spaghetti straps (Primrose, 22MK002B01)

PERSONALIZATION OPTIONS & PRICING

22MK002C01
(Modest)

MISCELLANEOUS PERSONALIZATION PRICING

Remove the train for a more casual look through special request

Ramira 23MC093A01

MAGGIE SOTTERO®

personalize it!
FOR YOUR LOVE STORY





23MC093A01, IV/NAT



23MC093A01, IV/NAT



Dress: 23MC093A01, IV/NAT
Jacket: JK023MC093000, IV/IV
Size 6

Ramira 23MC093A01

COLORS

- Ivory gown with Natural Illusion

HIGHLIGHTS

- Olya Mikado
- Bodice accented with beaded lace motifs
- Sweetheart neckline with deep illusion plunge
- Zipper with inner elastic closure and covered buttons trailing to the hem
- Pockets

SIZES: 0-28

ACCESSORIES

- Detachable lace jacket sold separately

MISCELLANEOUS

- Extra lace motif included for minor neckline alterations

PERSONALIZATION OPTIONS & PRICING

23MC093A01

ACCESSORIES PRICING

JK023MC093000
(Jacket)

MISCELLANEOUS PERSONALIZATION PRICING

Opt to shorten the train (up to 12 in/ 30 cm) or remove the train for a more casual look through special request

Raquelle 23MC066A01

MAGGIE SOTTERO®

personalize it!
FOR YOUR LOVE STORY



Dress: 23MC066A01, IV/IV
Chapel veil (Essex): VLB22SK006000, IV
Size: 6



Dress: 23MC066A01, IV/IV
Chapel veil (Essex): VLB22SK006000, IV



23MC066A01, IV/IV



MAGGIE SOTTERO
THIS GOWN IS MADE WITH LUXE
JERSEY LINING
Designed for a comfortable fit that is ultra-lightweight

23MC066A01, IV/IV



Dress: 23MC066A01, IV/IV
Fingertip veil (Essex): VLA22SK006000, IV



23MC066A01, IV/IV



23MC066A01, IV/IV

Raquelle 23MC066A01

COLORS

- Ivory gown with Ivory Illusion

HIGHLIGHTS

- Aldora stretch crepe
- Beaded bodice accented with pearls and crystals
- Illusion V-neck with sweetheart base
- Deep illusion V-back
- Beaded illusion cap-sleeves
- Lined with Wynn stretch jersey for comfort
- Zipper with covered buttons trailing to the hem

SIZES: 0-28

ACCESSORIES

- Fingertip wedding veil adorned in beaded detailing sold separately (Essex, VLA22SK006000) *Veil measures 46 in (117 cm)
- Chapel length tulle veil edged in beaded detailing sold separately (Essex, VLB22SK006000) *Veil measures 108 in (274 cm)

PERSONALIZATION OPTIONS & PRICING

23MC066A01

ACCESSORIES PRICING

VLA22SK006000 (Essex)
(Fingertip veil)

VLB22SK006000 (Essex)
(Chapel veil)

MISCELLANEOUS PERSONALIZATION PRICING

Extend the train for added drama (up to 12 in/30 cm) or remove the train for a more casual look through special request

Rory 23MC128A01

MAGGIE SOTTERO®

personalize it!
FOR YOUR LOVE STORY



23MC128A01, IV VMV/NAT



23MC128A01, IV VMV/NAT



23MC128B02, IV MCH/NAT



23MC128A01, IV VMV/NAT



23MC128A01, IV VMV/NAT
Size 6



Rory 23MC128A01

COLORS

- All Ivory gown with Ivory Illusion
- Ivory over Blush gown with Natural Illusion
- Ivory over Vintage Mauve gown with Natural Illusion (pictured)
- Ivory over Mocha gown with Natural Illusion (pictured)

HIGHLIGHTS

- Lace motifs with sequin accent over sparkle texture tulle
- Sheer lace bodice lined with organza
- Deep illusion V-neckline
- Deep V-back
- Beaded back spaghetti straps
- Covered button over zipper closure
- Illusion side panels

SIZES: 0-28

MISCELLANEOUS

- Extra lace motif included for minor neckline alterations
- Photographed with light nude bra cups, dark nude available separately

PERSONALIZATION OPTIONS & PRICING

23MC128A01 <i>(Unlined bodice, texture tulle 3)</i>
23MC128A02 <i>(Unlined bodice, change texture tulle 3 to sparkle tulle 1)</i>
23MC128A03 <i>(Unlined bodice, change texture tulle 3 to plain tulle)</i>
23MC128B01 <i>(Lined bodice, texture tulle 3)</i>
23MC128B02 <i>(Lined bodice, change texture tulle 3 to sparkle tulle 1)</i>
23MC128B03 <i>(Lined bodice, change texture tulle 3 to plain tulle)</i>

MISCELLANEOUS PERSONALIZATION PRICING

Remove the train for a more casual look through special request

Saige 23MC120A01

MAGGIE SOTTERO®

personalize it!
FOR YOUR LOVE STORY





Dress: 23MC120A01, IV MV/IV
Bell sleeves: DSA23MC120000, IV/IV
Size 6



23MC120B02, IV MCH/IV



23MC120A01, IV MV/IV



Dress: 23MC120A01, IV MV/IV
Fitted sleeves:
DSB23MC120000, IV/IV



Dress: 23MC120A01, IV MV/IV
Bell sleeves:
DSA23MC120000, IV/IV

Saige 23MC120A01

COLORS

- All Ivory gown with Ivory Illusion
- Ivory over Misty Mauve gown with Ivory Illusion (pictured)
- Ivory over Blush gown with Ivory Illusion
- Ivory over Mocha gown with Ivory Illusion (pictured)

HIGHLIGHTS

- Beaded lace over sparkle tulle
- Sheer hip dips lined with organza
- Illusion halter neck with plunging V-neckline
- Illusion lace plunging V-back
- Beaded lace motif spaghetti straps
- Covered button over zipper closure

SIZES: 0-28

ACCESSORIES

- Detachable long illusion lace flare sleeves sold separately
- Detachable long illusion lace fitted sleeves sold separately

MISCELLANEOUS

- Extra lace motif included for minor neckline alterations

PERSONALIZATION OPTIONS & PRICING

23MC120A01 <i>(Unlined bodice, sparkle tulle 1)</i>
23MC120A02 <i>(Unlined bodice, change sparkle tulle 1 to plain tulle)</i>
23MC120B01 <i>(Lined bodice, sparkle tulle 1)</i>
23MC120B02 <i>(Lined bodice, change sparkle tulle 1 to plain tulle)</i>

ACCESSORIES PRICING

DSA23MC120000 <i>(Bell sleeves)</i>
DSB23MC120000 <i>(Fitted sleeves)</i>

MISCELLANEOUS PERSONALIZATION PRICING

Shorten the train (up to 12 in/30 cm) or remove the train for a more casual look through special request
--

Saratoga 23MW122A01

MAGGIE SOTTERO®

personalize it!
FOR YOUR LOVE STORY





23MW122A01, IV
Size 6



23MW122A01, IV

Saratoga 23MW122A01

COLORS

- All Ivory (pictured)

HIGHLIGHTS

- Ganavi stretch Mikado
- One shoulder tank strap
- Deep V-back with three beaded straps
- Lined with Brisa stretch jersey for comfort
- Covered buttons over zipper closure
- Side skirt slit
- Detachable Ganavi stretch Mikado shoulder bow detail included

SIZES: 0-28

PERSONALIZATION OPTIONS & PRICING

23MW122A01
(Slit)

23MW122A11
(No slit)

MISCELLANEOUS PERSONALIZATION PRICING

Opt to shorten the train (up to 12 in/61 cm) or remove the train for a more casual look through special request

Sloan 23MC058A01

MAGGIE SOTTERO®

personalize it!
FOR YOUR LOVE STORY





Sloan 23MC058A01

COLORS

- Ivory/Pewter Accent
- Ivory/Pewter Accent over Blush (pictured)
- Ivory/Pewter Accent over Misty Mauve

HIGHLIGHTS

- Sequin embellished lace motifs over Chantilly lace and sparkle textured tulle
- Halter neckline
- Deep keyhole back
- Spaghetti halter straps with sequin accents
- Covered button over zipper closure

SIZES: 0-28

PERSONALIZATION OPTIONS & PRICING

23MC058A01

(Texture tulle 3)

23MC058A02

(Change texture tulle 3 to plain tulle)

MISCELLANEOUS PERSONALIZATION PRICING

Extend the train for added drama (up to 12 in/30 cm), or remove the train for a more casual look through special request

Add covered buttons down the back for a vintage vibe

Terra 23MN092A01

MAGGIE SOTTERO®

personalize it!
FOR YOUR LOVE STORY





23MN092B02, IV MCH/NAT



23MN092A01, IV SBLS/NAT
Size 6



23MN092A01, IV SBLS/NAT



23MN092B02, IV MCH/NAT



23MN092A01, IV SBLS/NAT

Terra 23MN092A01

COLORS

- Ivory gown with Natural Illusion
- Ivory over Soft Blush gown with Natural Illusion (pictured)
- Ivory over Mocha gown with Natural Illusion (pictured)

HIGHLIGHTS

- Beaded 3-D lace motifs over beaded tulle
- Illusion beaded lace bodice
- V-neckline
- Beaded spaghetti straps
- Covered button over zipper closure
- Extended illusion lace train

SIZES: 0-28

MISCELLANEOUS

- Photographed with light nude bra cups, dark nude available separately

PERSONALIZATION OPTIONS & PRICING

23MN092A01 <i>(Unlined bodice, beaded tulle 1)</i>
23MN092A02 <i>(Unlined bodice, change beaded tulle in skirt only to plain tulle)</i>
23MN092B01 <i>(Lined bodice, beaded tulle 1)</i>
23MN092B02 <i>(Lined bodice, change beaded tulle in skirt only to plain tulle)</i>

MISCELLANEOUS PERSONALIZATION PRICING

Opt to shorten the train (up to 24 in/61 cm) or remove the train for a more casual look through special request

Add covered buttons down the back for a vintage vibe

Trista 23MW116A01

MAGGIE SOTTERO®

personalize it!
FOR YOUR LOVE STORY





Trista 23MW116A01

COLORS

- All Ivory gown with Ivory Illusion
- Ivory over Misty Mauve gown with Ivory Illusion (pictured)
- Ivory over Blush gown with Ivory Illusion

HIGHLIGHTS

- Unembellished lace motifs over tulle
- Straight strapless neckline
- Illusion back bodice with exposed boning detail
- Covered button over zipper closure
- Scattered lace motif hem finish

SIZES: 0-28

ACCESSORIES

- Detachable lace cap-sleeves sold separately
- Detachable illusion jacket with long bishop sleeves sold separately
**Shown tucked in*
- Cathedral wedding veil edged with lace motifs sold separately
**Veil measures 120 in (305 cm)*

PERSONALIZATION OPTIONS & PRICING

23MW116A01

ACCESSORIES PRICING

CS023MW116000 <i>(Cap-sleeves)</i>
JK023MW116000 <i>(Jacket)</i>
VL023MW116000 <i>(Cathedral veil)</i>

MISCELLANEOUS PERSONALIZATION PRICING

Extend the train for added drama (up to 12 in/30 cm), opt to shorten the train (up to 24 in/61 cm) or remove the train for a more casual look through special request
Add covered buttons down the back for a vintage vibe

Ulanda 23MK067A01

MAGGIE SOTTERO®

personalize it!
FOR YOUR LOVE STORY





Dress: 23MK067A01, IV SBL5
Cap-sleeves: CS023MK067Q00, IV/IV



23MK067A01, IV SBL5



23MK067A02, IV LTTE



23MK067A01, IV SBL5
Size 6

Ulanda 23MK067A01

COLORS

- Ivory
- Ivory over Soft Blush (pictured)
- Ivory over Latte (pictured)

HIGHLIGHTS

- Sequined lace motifs over Aurora glitter tulle
- Strapless sweetheart neckline
- Covered button over zipper and inner elastic closure
- Extended sheer lace train

SIZES: 0-28

ACCESSORIES

- Detachable off-the-shoulder lace cap-sleeves sold separately
- Royal length tulle veil embellished with lace motifs sold separately *Veil measures 144 in (366 cm)

PERSONALIZATION OPTIONS & PRICING

23MK067A01 <i>(Aurora glitter tulle)</i>
23MK067A02 <i>(Change Aurora glitter tulle to glitter tulle 3)</i>
23MK067A03 <i>(Change Aurora glitter tulle to plain tulle)</i>

ACCESSORIES PRICING

CS023MK067000 <i>(Cap-sleeves)</i>
VL023MK067000 <i>(Royal veil)</i>

MISCELLANEOUS PERSONALIZATION PRICING

Opt to shorten the train (up to 12 in/30 cm), or remove the train for a more casual look through special request

Add covered buttons down the back for a vintage vibe

Veronique 23MK133A01

MAGGIE SOTTERO®

personalize it!
FOR YOUR LOVE STORY





23MK133A01, IV ND/NAT



23MK133A01, IV ND/NAT
Size 6



Dress: 23MK133A01, IV ND/NAT
Detachable long sleeves: DS023MK133000, IV/NAT

Veronique 23MK133A01

COLORS

- All Ivory gown with Ivory Illusion
- Ivory over Nude gown with Natural Illusion (pictured)

HIGHLIGHTS

- Beaded lace motifs over glitter tulle
- Deep illusion V-neckline
- Plunging illusion lace V-back
- Sequined lace spaghetti straps
- Lined with Sorella satin
- Covered button over zipper closure
- Extended scalloped illusion lace train

SIZES: 0-28

ACCESSORIES

- Detachable fitted illusion lace long sleeves sold separately
- Chapel length veil embellished with lace motifs sold separately
**Veil measures 120 in (305 cm)*

MISCELLANEOUS

- Extra lace motif included for minor neckline alterations

PERSONALIZATION OPTIONS & PRICING

23MK133A01 <i>(Glitter tulle)</i>
23MK133A02 <i>(Change glitter tulle to sparkle tulle †)</i>
23MK133A03 <i>(Change glitter tulle to plain tulle)</i>

ACCESSORIES PRICING

DS023MK133000 <i>(Detachable long sleeves)</i>
VL023MK133000 <i>(Cathedral veil)</i>

MISCELLANEOUS PERSONALIZATION PRICING

Extend the train for added drama (up to 12 in/30 cm), or opt to shorten the train (up to 12 in/30 cm)

Add covered buttons down the back for a vintage vibe

Watson 23MC047A01

MAGGIE SOTTERO®

personalize it!
FOR YOUR LOVE STORY





23MC047A01, BLK ND



23MC047A01, BLK ND



23MC047A01, BLK ND



Dress:
23MC047A01, BLK ND
Cathedral veil:
VL023MC047000, BLK



Dress:
23MC047A01, BLK ND
Cathedral veil:
VL023MC047000, BLK

Watson 23MC047A01

COLORS

- All Ivory
- Ivory/Champagne Accent over Blush
- Black over Nude (pictured)

HIGHLIGHTS

- Sequin embroidery over tulle
- V-neckline
- V-back
- Tavira satin spaghetti straps
- Covered button over zipper closure
- Attached velvet belt
- Horsehair hem finish

SIZES: 0-28

ACCESSORIES

- Cathedral length veil embellished with sequin embroidery sold separately
**Veil measures 120 in (305 cm)*

PERSONALIZATION OPTIONS & PRICING

23MC047A01

ACCESSORIES PRICING

VL023MC047000
(Cathedral veil)

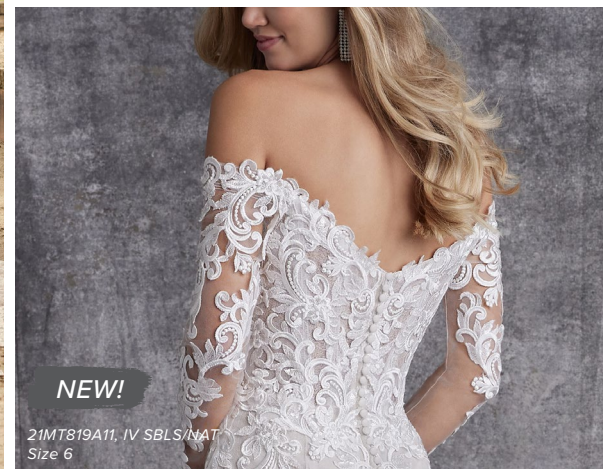
MISCELLANEOUS PERSONALIZATION PRICING

Add covered buttons down the back for a vintage vibe

Edison 21MT819A01

MAGGIE SOTTERO®

personalize it!
FOR YOUR LOVE STORY





Edison 21MT819A01

COLORS

- Light Ivory gown with Natural Illusion
- Ivory gown with Natural Illusion
- Ivory over Soft Blush gown with Natural Illusion (pictured)

HIGHLIGHTS

- Lace motifs over tulle
- Sheer lace bodice lined with organza
- Off-the-shoulder V-neckline
- V-back
- Off-the-shoulder illusion lace sleeves
- Lined with Lorena stretch jersey for comfort
- Covered buttons over zipper closure
- Elastic off-the-shoulder sleeves for movability
- Scalloped lace train

SIZES: 0–28

ACCESSORIES

- Detachable scalloped lace train extension sold separately
*Personalization options available
- **NEW!** Detachable beaded belt (Geddes, BB022MS947000)

MISCELLANEOUS

- Photographed with light nude bra cups, dark nude available separately

PERSONALIZATION OPTIONS

21MT819A01 (Unlined bodice, texture tulle)
23MS041A02 *Personalization fee applies (Unlined bodice, change texture tulle to sparkle tulle 1)
23MS041A03 *Personalization fee applies (Unlined bodice, change texture tulle to Chantilly lace 2 with sequin)
*NEW 21MT819A11 *Personalization fee applies (Unlined bodice, long sleeves, texture tulle)
*NEW 23MS041A12 *Personalization fee applies (Unlined bodice, long sleeves, change texture tulle to sparkle tulle 1)
*NEW 23MS041A13 *Personalization fee applies (Unlined bodice, long sleeves, change texture tulle to Chantilly lace 2 with sequin)
23MS041B01 *Personalization fee applies (Lined bodice, texture tulle)
23MS041B02 *Personalization fee applies (Lined bodice, change texture tulle to sparkle tulle 1)
23MS041B03 *Personalization fee applies (Lined bodice, change texture tulle to Chantilly lace 2 with sequins)
*NEW 23MS041B11 *Personalization fee applies (Lined bodice, long sleeves, texture tulle)
*NEW 23MS041B12 *Personalization fee applies (Lined bodice, long sleeves, change texture tulle to sparkle tulle 1)
*NEW 23MS041B13 *Personalization fee applies (Lined bodice, long sleeves, change texture tulle to Chantilly lace 2 with sequin)

ACCESSORIES

TE021MT819000 (Detachable train extension, texture tulle)
TEA21MT819000 (Detachable train extension, sparkle tulle)
TEB21MT819000 (Detachable train extension, Chantilly lace)
BB022MS947000 (Geddes) (Beaded belt)

MISCELLANEOUS PERSONALIZATION

Add buttons down the back for a vintage vibe

Harlem 22MT513A01

MAGGIE SOTTERO®

personalize it!
FOR YOUR LOVE STORY



22MT513A01, DW/DW
Size 6



22MT513B01, IV BLS/NAT
Size 6



NEW!

22MT513A11, IV BLS/NAT



NEW!

Dress (Harlem Lane): 23MS054A11, IV BLS/NAT
Veil: VL023MS054000, IV



22MT513A01, DW/DW
Size 6



Harlem 22MT513A01

COLORS

- All Diamond White gown with Diamond White Illusion (pictured)
- All Ivory gown with Ivory Illusion
- Ivory over Blush gown with Natural Illusion (pictured)
- Ivory over Misty Mauve gown with Natural Illusion

HIGHLIGHTS

- Lace motifs with sequins over tulle
- A-line silhouette
- Sheer lace bodice lined with organza
- Sweetheart neckline
- Soft V-back
- Off-the-shoulder illusion lace cap sleeves
- Covered buttons over zipper closure
- Elastic off-the-shoulder sleeves for movability

SIZES: 0-28

ACCESSORIES

- **NEW!** Cathedral wedding veil edged in sequin lace motifs sold separately
*Veil measures 120 in (305 cm)

MISCELLANEOUS

- Photographed with light nude bra cups, dark nude available separately

SISTER STYLES

- **NEW!** Available as fit and flare silhouette (Harlem Lane, 23MS054A01)

PERSONALIZATION OPTIONS

22MT513A01 (Unlined bodice, A-line, no beading, plain tulle)
22MT513A02 *Personalization fee applies (Unlined bodice, A-line, no beading, change plain tulle to sparkle tulle 1)
*NEW 22MT513A11 *Personalization fee applies (Unlined bodice, A-line, beaded, plain tulle)
*NEW 22MT513A12 *Personalization fee applies (Unlined bodice, A-line, beaded, change plain tulle to sparkle tulle 1)
22MT513B01 *Personalization fee applies (Lined bodice, A-line, no beading, plain tulle)
22MT513B02 *Personalization fee applies (Lined bodice, A-line, no beading, change plain tulle to sparkle tulle 1)
*NEW 22MT513B11 *Personalization fee applies (Lined bodice, A-line, beaded, plain tulle)
*NEW 22MT513B12 *Personalization fee applies (Lined bodice, A-line, beaded, change plain tulle to sparkle tulle 1)

ACCESSORIES

- ***NEW** VL023MS054000
(Cathedral length veil)

MISCELLANEOUS PERSONALIZATION

- Add buttons down the back for a vintage vibe

NEW!

Harlem Lane 23MS054

MAGGIE SOTTERO®

personalize it!
FOR YOUR LOVE STORY





Harlem Lane 23MS054

COLORS

- All Ivory gown with Ivory Illusion
- Ivory over Misty Mauve gown with Natural Illusion
- Ivory over Blush gown with Natural Illusion (pictured)

HIGHLIGHTS

- Lace motifs with sequins over tulle
- Fit and flare silhouette
- Sheer lace bodice lined with organza
- Sweetheart neckline
- Soft V-back
- Off-the-shoulder illusion lace cap sleeves
- Covered buttons over zipper closure
- Elastic off-the-shoulder sleeves for movability

SIZES: 0–28

ACCESSORIES

- **NEW!** Cathedral wedding veil edged in sequin lace motifs sold separately (Harlem, VL023MS054000) *Veil measures 120 in (305 cm)

MISCELLANEOUS

- Photographed with light nude bra cups, dark nude available separately

SISTER STYLES

- Available as an A-line silhouette (Harlem, 22MT513A01)

PERSONALIZATION OPTIONS

23MS054A01 (Unlined bodice, fit and flare, plain tulle)
23MS054A02 *Personalization fee applies (Unlined bodice, fit and flare, change plain tulle to sparkle tulle 1)
23MS054A11 *Personalization fee applies (Unlined bodice, fit and flare, beaded, plain tulle)
23MS054A12 *Personalization fee applies (Unlined bodice, fit and flare, beaded, change plain tulle to sparkle tulle 1)
23MS054B01 *Personalization fee applies (Lined bodice, fit and flare, plain tulle)
23MS054B02 *Personalization fee applies(Lined bodice, fit and flare, change plain tulle to sparkle tulle 1)
23MS054B11 *Personalization fee applies (Lined bodice, fit and flare, beaded, plain tulle)
23MS054B12 *Personalization fee applies (Lined bodice, fit and flare, beaded, change plain tulle to sparkle tulle 1)

ACCESSORIES

VL023MS054000 (Harlem)
(Cathedral length veil)

MISCELLANEOUS PERSONALIZATION

Extend the train for added drama (up to 12 in/30 cm), opt to shorten the train (up to 12 in/30 cm) or remove the train for a more casual look through special request

Add buttons down the back for more of a vintage-vibe

NEW!

Johanna Lane 23MS041

MAGGIE SOTTERO®

personalize it!
FOR YOUR LOVE STORY



23MS041A01, IV/NAT
Size 6



Dress (Johanna): 21MS349A01, IV MV/ND
Veil (Johanna): VL021XS349000, IV
Size 6



23MS041B02, IV/NAT



23MS041B02, IV/NAT



23MS041A01, IV/NAT



23MS041B02, IV/NAT



23MS041A01, IV/NAT



23MS041A01, IV/NAT
Size 6



23MS041B02, IV/NAT



23MS041A01, IV/NAT



Dress (Johanna): 21MS349A01, IV/MV/ND
Sleeves (Johanna): DS021MS349000, IV/IV
Size 6

Johanna Lane 23MS041

COLORS

- Ivory gown with Natural Illusion (pictured)

HIGHLIGHTS

- Eva crepe
- Sheath silhouette
- Beaded lace motifs over sheer sequin Chantilly lace bodice lined with organza
- Plunging illusion V-neckline
- Deep illusion lace V-back
- Illusion lace tank straps
- Zipper with covered buttons trailing to the train
- Scalloped illusion lace train

SIZES: 0–28

ACCESSORIES

- Detachable illusion lace long sleeves sold separately (Johanna)
- Fingertip tulle veil accented with beaded trim sold separately (Johanna) *Veil measures 46 in (117 cm)

MISCELLANEOUS

- Extra lace motif included for minor neckline alterations
- Photographed with light nude bra cups, dark nude available separately

SISTER STYLES

- Available as a full lace A-line silhouette (Johanna, 21MS349A01)

PERSONALIZATION OPTIONS

23MS041A01 (Unlined bodice, Chantilly lace 1 with sequin)
23MS041A02 *Personalization fee applies (Unlined bodice, change Chantilly lace 1 with sequin to sparkle tulle 1)
23MS041A03 *Personalization fee applies (Unlined bodice, change Chantilly lace 1 with sequin to Chantilly lace 1)
23MS041B01 *Personalization fee applies (Lined bodice, Chantilly lace 1 with sequin)
23MS041B02 *Personalization fee applies (Lined bodice, change Chantilly lace 1 with sequin to sparkle tulle 1)
23MS041B03 *Personalization fee applies (Lined bodice, change Chantilly lace 1 with sequin to Chantilly lace 1)

ACCESSORIES

DS021MS349000 (Johanna) (Illusion lace long sleeves)
VLO21XS349000 (Johanna) (Fingertip tulle veil)

MISCELLANEOUS PERSONALIZATION

Extend the train for added drama (up to 12 in/30 cm), opt to shorten the train (up to 12 in/30 cm) or remove the train for a more casual look through special request

Kyrie 22MS979A01

MAGGIE SOTTERO®

personalize it!
FOR YOUR LOVE STORY





NEW!

Dress: 22MS979B01, IV



Dress: 22MS979A01, IV
Jacket (Mesa): CA022MZ943000, IV/SLV
Size 12



Dress: 22MS979A01, IV
Jacket (Danae): JK022MW998000, IV/IV
Size 6

Kyrie 22MS979A01

COLORS

- All Ivory (pictured)

HIGHLIGHTS

- Stavanger satin
- Pleated skirt
- Strapless sweetheart neckline
- Zipper with inner elastic closure with covered buttons trailing down the hem
- Pockets
- Attached Stavanger satin belt

SIZES: 0-28

ACCESSORIES

- Detachable beaded illusion cape sold separately (Mesa)
- Tulle jacket accented with beaded lace sold separately (Danae)
- **NEW!** Detachable Mago satin neckline dress wrap sold separately
- **NEW!** Detachable beaded straps sold separately (Geddes)
- **NEW!** Detachable beaded straps sold separately (Victoriana)

PERSONALIZATION OPTIONS

22MS979A01 (Pleated skirt)
*NEW 22MS979B01 *Personalization fee applies (No pleats)

ACCESSORIES

NEW! SWA22MS979000 (Neckline wrap)
JK022MW998000 (Danae) (Tulle jacket)
SS022MS94700 (Geddes) (Beaded straps)
CA022MZ943000 (Mesa) (Beaded illusion cape)
SS022MS946000 (Victoriana) (Beaded straps)

MISCELLANEOUS PERSONALIZATION

Extend the train for added drama (up to 12 in/30 cm) or remove the train for a more casual look through special request

Scarlet 22MW971A01

MAGGIE SOTTERO®

personalize it!
FOR YOUR LOVE STORY





22MW971A01, RD
Size 6



22MW971A01, RD
Size 6



22MW971B01, DW
Size 6

Scarlet 22MW971A01

COLORS

- Diamond White (pictured)
- Red (pictured)
- **NEW!** Black (pictured)

HIGHLIGHTS

- Nouvelle stretch satin
- Ruched Nouvelle stretch satin bodice
- Soft scoop neckline
- V-back
- Nouvelle stretch satin spaghetti straps
- Zipper closure with covered buttons trailing down the hem
- Pockets

SIZES: 0–28

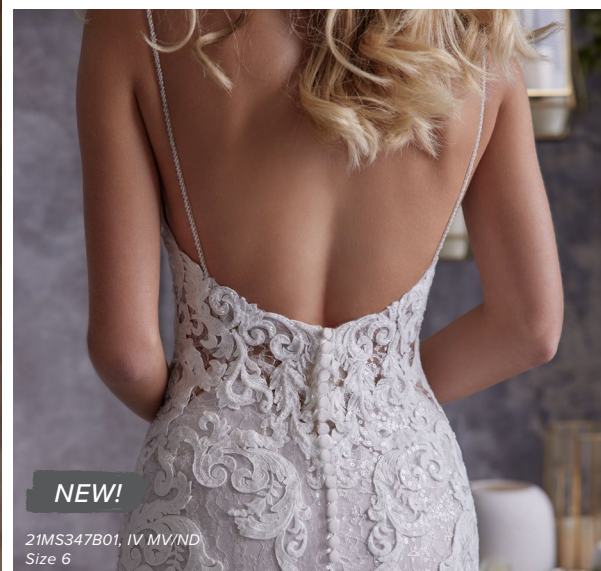
PERSONALIZATION OPTIONS

22MW971A01 (No slit)
22MW971B01 *Personalization fee applies (Slit)

Tuscany Royale 21MS347A01

MAGGIE SOTTERO®

personalize it!
FOR YOUR LOVE STORY



Tuscany Royale 21MS347A01

COLORS

- All Ivory gown with Ivory Illusion
- Ivory gown with Nude Illusion
- Ivory over Blush gown with Nude Illusion (pictured)
- Ivory over Misty Mauve gown with Nude Illusion (pictured)

HIGHLIGHTS

- Detachable scalloped tulle train with scattered lace motifs
- Finished with lace along the hem
- Plunging illusion V-neckline
- Illusion scoop back
- Beaded spaghetti straps
- Covered buttons over zipper closure

SIZES: 0–28

ACCESSORIES

- Detachable illusion lace long sleeves sold separately
- Detachable illusion lace scallop train extension sold separately
*Personalization options available
- Detachable scalloped tulle train with scattered lace motifs
- Cathedral tulle veil edged in sequined lace motifs sold separately
*Veil measures 148 in (376 cm)
- Chapel tulle veil edged in sequined lace motifs sold separately (Tuscany) *Veil measures 108 in (274 cm)
- Fingertip tulle veil edged in sequin lace motifs sold separately (Tuscany Marie) *Veil measures 46 in (117 cm)

MISCELLANEOUS

- Extra lace motif included for minor neckline alterations
- Photographed with light nude bra cups, dark nude available separately

SISTER STYLES

- Available with lined bodice, V-train and without beading and sequins (Tuscany, 8MS794)
- Available with unlined bodice, V-train and without beading and sequins (Tuscany Lynette, 8MS794MC)
- Available in A-line silhouette and without beading and sequins (Tuscany Lane, 20MS310)
- Available with added coverage, V-train and without beading and sequins (Tuscany Marie, 20MS794AC)
- Available with modest coverage, V-train and without beading and sequins (Tuscany Leigh, 9MS922)



PERSONALIZATION OPTIONS

21MS347A01 (Sleeveless, Chantilly lace 2 with sequin)
21MS347A02 *Personalization fee applies (Sleeveless, change Chantilly lace 2 with sequin to Chantilly lace 2)
21MS347A05 *Personalization fee applies (Sleeveless, change Chantilly lace 2 with sequin to sparkle tulle 1)
21MS347A11 *Personalization fee applies (Attached long sleeves, Chantilly lace 2 with sequin)
21MS347A12 *Personalization fee applies (Attached long sleeves, change Chantilly lace 2 with sequin to Chantilly lace 2)
21MS347A15 *Personalization fee applies (Attached long sleeves, change Chantilly lace 2 with sequin to sparkle tulle 1)
*NEW 21MS347B01 *Personalization fee applies (Sleeveless, back neckline lowered by 3.5" base/lining layer lowered by 2", Chantilly lace 2 with sequin)
*NEW 21MS347B02 *Personalization fee applies (Sleeveless, back neckline lowered by 3.5" base/lining layer lowered by 2", Chantilly lace 2 with sequin)
*NEW 21MS347B05 *Personalization fee applies (Sleeveless, back neckline lowered by 3.5" base/lining layer lowered by 2", Chantilly lace 2 with sequin)
*NEW 21MS347B11 *Personalization fee applies (Attached sleeves, back neckline lowered by 3.5" base/lining layer lowered by 2", Chantilly lace 2 with sequin)
*NEW 21MS347B12 *Personalization fee applies (Attached sleeves, back neckline lowered by 3.5" base/lining layer lowered by 2", change Chantilly lace 2 with sequin to Chantilly lace 2)
*NEW 21MS347B15 *Personalization fee applies (Attached sleeves, low back, change Chantilly lace 2 with sequin to sparkle tulle 1)

ACCESSORIES

DS021MS347000 (Long sleeves)
TE021XS347000 (Detachable train extension, plain tulle)
TEA21XS347000 (Detachable train extension, Chantilly lace with sequin)
TEB21XS347000 (Detachable train extension, Chantilly lace)
DTA21MS347000 (Detachable train)
VL021XS347000 (Cathedral length veil)
DS021MS347000 (Tuscany) (Chapel length veil)
VL20XS749 (Tuscany Marie) (Fingertip veil)

MISCELLANEOUS PERSONALIZATION

Extra lace motif included for minor neckline alterations
Add buttons down the back for a vintage vibe

quick ship

MAGGIE SOTTERO



Gowns available in 10 weeks or less! For your convenience, Quick Ship stickers are available to place on your samples to identify gowns available in the Quick Ship program! Ask your Sales Representative for more details!



Fayette
22MS933



Fiona*
21MS366A01



Frederique*
22MC516A01



Greenley
20MT284



Harlem*
22MT513A01



Johanna*
21MS349A01



Kern
22MT970A01



Mallory Dawn*
9MS114



Nikki
20MS678



Paxton*
22MS954A01



Paxton*
22MS954B01



Stevie*
20MS604



Tuscany Lynette*
8MS794MC



Tuscany Royale*
21MS347A01

quick ship

Maggie Sottero
DESIGNS™
ACCESSORIES



Gowns available in 10 weeks or less! For your convenience, Quick Ship stickers are available to place on your samples to identify gowns available in the Quick Ship program! Ask your Sales Representative for more details!



Fiona Sleeves
DS021MS366000



Johanna Sleeves
DS021MS349000



Nikki Sleeves
DS20MS678



Stevie Sleeves
DS20MS604



Tuscany Marie Veil
VL20XS749



Tuscany Royale Sleeves
DS021MS347000



Tuscany Royale Veil
VL021XS347000



Tuscany Veil
VL20XS331

*Ideal for CURVY brides

Note: Personalizations and Special lengths do not apply. Effective July 1, 2022. Extended deliveries may apply during Chinese holidays.